



 **chemco**







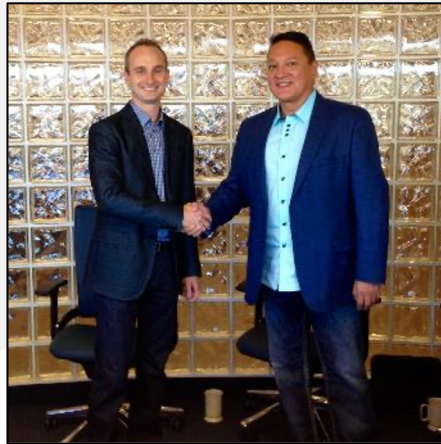
# About Chemco



- For over 60 years, Chemco has built industry across Canada. We are a multi-disciplined contractor that provides clients with the services needed to both build and maintain their facilities.
- **“One Partner. Many Strengths.”** - From engineering through to commissioning, our multi-disciplined approach allows for one point of contact and continuity for the entire life cycle of a project.
- Our wide range of services are shared across all Chemco companies to ensure flexibility needed by clients.



# Core Values



## People First

Relationships with our internal and external partners are the cornerstones of our organization. We foster open communication in an environment where high performance matters and potential is realized.



## Safety

We share an unyielding commitment to safety excellence. We are dedicated to providing our people with the training, knowledge, and tools to work safely.



## Accountability

We embrace our individual and team responsibilities. We take full ownership of our actions and their outcomes.





# Safety Is Built Into Everything We Do



We're committed to our goal of an injury and incident free workplace. The ultimate measure of HSE success is employees completing each shift without harm to people, environment, and equipment.



## TRAINING

Ongoing training is critical to any safety program. Our training program ensures employees are able to stay current through in person classes or through our online portal.

## COMMITMENT

With a top down approach, ownership and senior management are actively involved in setting annual EH&S targets and objectives.

## INDUSTRY INVOLVEMENT

Chemco team members sit on the board of or are actively involved in several Canadian safety organizations.





CHEMCO

# One Partner. Many Strengths.

From engineering through to commissioning we provide our clients with the construction disciplines they need to build and maintain their facilities.

**chemco**



## **Building Industry and Building Canada Over 60 Years**

Employee owned and operated with thousands of skilled tradespeople, our strength is our ability to provide an experienced project leadership team, augmented by highly trained tradespeople who understand what is needed to execute a successful project safely and with the highest level of quality.







# Providing Client Focused Solutions Across Canada



## SERVICES



- Electrical
- Instrumentation
- Civil/Earthworks
- Fiber Optics



- Access Matting
- Hydrovac
- Horizontal Drilling
- Rail Civil Construction



- Engineering
- Logistics/Heavy Haul
- Site Equipment



- Project E&I Material
- Common Site Services





# Powering Facilities Since 1963



From temporary power through to commissioning our Electrical Division has installed and maintained thousands of facilities across multiple industries.



- Low, medium and high voltage installations.
- High Voltage testing and commissioning.
- Maintenance and turnaround support.



## INSTRUMENTATION

# Installation Maintenance Commissioning

With decades of experience our Instrumentation Division can handle any size of small bore piping and tubing project.



### CERTIFIED TECHNICIANS

- Flow Measurement
- Analytical Equipment
- Fluid Meter Provers
- Steam/Glycol Tracing Systems



### ABSA CERTIFIED

- Instrument Air Systems
- Hydraulic Systems
- Tube Welding
- Small Bore Piping





Location Cats

# Civil Earthworks



**chemco**



Our extensive, modern fleet of heavy equipment means we will arrive on site with what you need to get the job done right, the first time.

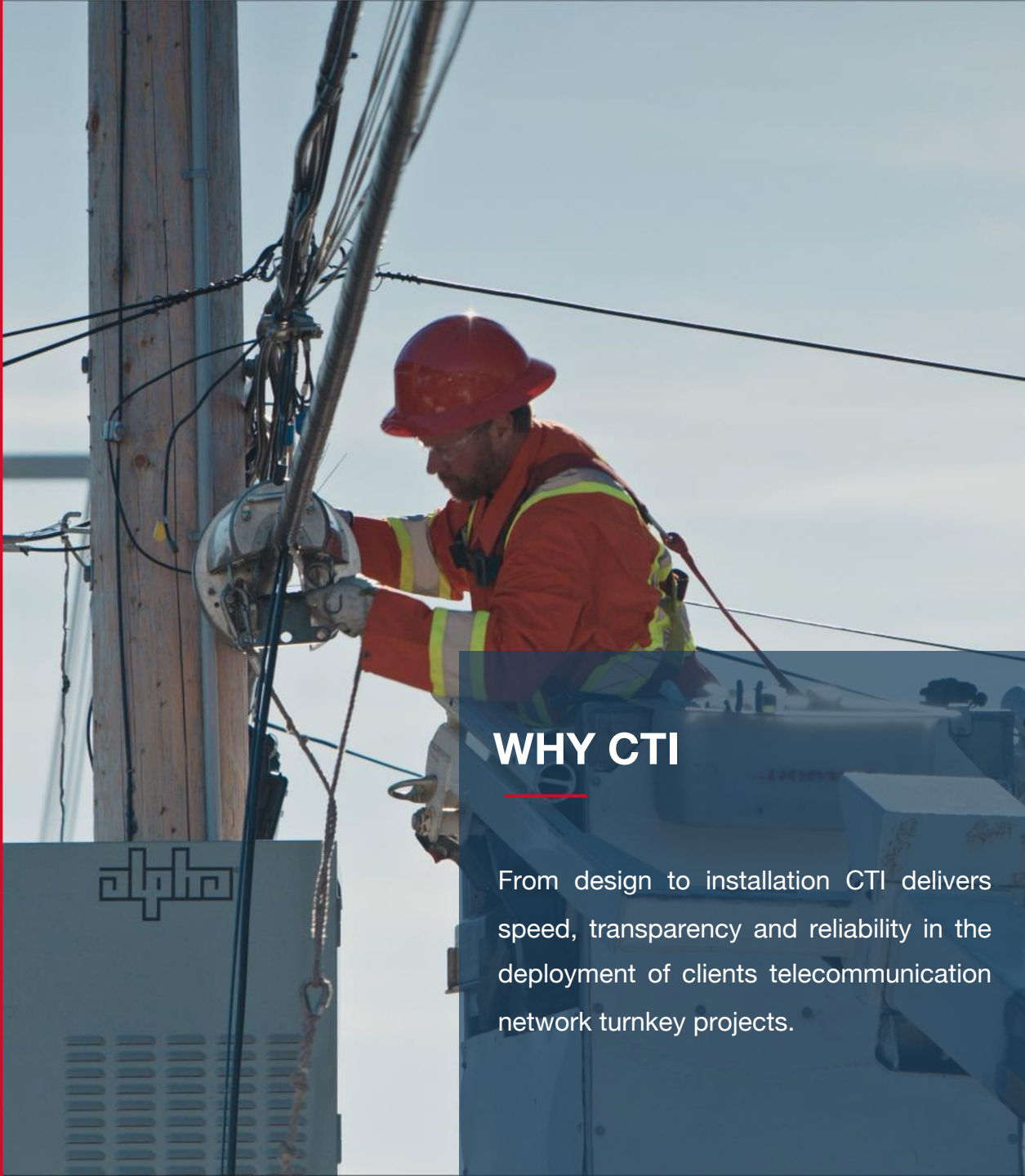
All maintained by our in-house certified mechanics.

Site preparation, lease building, road construction, winter road maintenance.

**GPS Controlled Equipment to  
Ensure Accuracy**







## WHY CTI

From design to installation CTI delivers speed, transparency and reliability in the deployment of clients telecommunication network turnkey projects.



# Building Infrastructure to Connect People







# Chemco's Access Matting Wood Processing Team

With Locations across western Canada we stock and install a wide variety of matting solutions to fit your needs. Whether providing temporary access to remote locations or a permanent platform for your project.



## Environmental Stewardship Means Full Life Cycle Matting Solutions

Minimizing our carbon footprint is critical. We own specialized equipment that is purpose built for the wood processing industry. This ensures minimal ground disturbance and repurposing discarded matting to eliminate landfill disposal.







# Hydrovac & HDD

**Platinum's Hydrovac fleet is equipped with 360 birds eye camera systems for additional public/work site safety.**



- Our Hydrovacs excavate and haul between 7,500 – 10,500 cubic meters of slurry each month.
- Our HDD division installs between 200 – 300,000 meters of underground/pipeline conduits per year. Ranging from 2" to 16" HDPE/steel pipe.
- Our fleet of water trucks are equipped to deliver potable and non-potable water.
- Our Steam trucks ensure Canada's winters don't slow down your project.





Our Electrical Engineering group provides comprehensive engineering solutions for power, industrial and commercial clients.

- ▣ Electrical distribution design for new facilities
- ▣ Engineering studies
- ▣ Lighting design
- ▣ Construction power and turnaround power design
- ▣ Installation details
- ▣ Engineering/drafting support
- ▣ Area Classification analysis
- ▣ Electrical equipment upgrades in existing facilities







**Chemco Rail's unique skill set has been crafted to meet the challenges of working on Canada's national and private rail systems.**



## **CONSTRUCTION**

Working on Class 1 Mainline Track in western Canada. Switching Yards and Transload Facility projects. Design-build projects including turn-key rail terminals.



## **MAINTENANCE**

Whether it's a planned outage or emergency response our team ensures the lines stay open. Including snow removal through winter months.



## **CROR QUALIFIED**

Our trained and certified team has decades of experience to ensure rail safety standards are met on all projects.







# Equipment



## PURPOSE BUILT EQUIPMENT



We own and maintain a full line of construction equipment, ensuring site productivity remains high.

With a large selection of manlifts, boom trucks, welders, generators, lighting plants, office trailers and sea cans we arrive on site ready to work.



## LOGISTICS & TRANSPORTATION



Chemco Logistics fleet ranges from 1-ton trucks and trailers up to tri-drive winch tractors with a wide variety of trailer combinations.

All maintained by our in-house team of certified licensed mechanics.







# A Warehouse of Inventory

...

Supplying Hundreds  
Of Projects

...

Extensive Inventory



To avoid delays in getting necessary material to site, we maintain an extensive inventory of current electrical, instrumentation, fiber optics, heat trace, and high voltage materials.





- ❑ temporary power
- ❑ water supply
- ❑ road maintenance
- ❑ sanitation facilities (portable toilets and wash stations)
- ❑ waste management solutions for construction debris
- ❑ communication systems
- ❑ on-site storage
- ❑ safety equipment and first aid stations

## Common Site Services

Common Site Services are the foundation of any successful construction project, providing critical infrastructure that keeps operations running efficiently and safely.

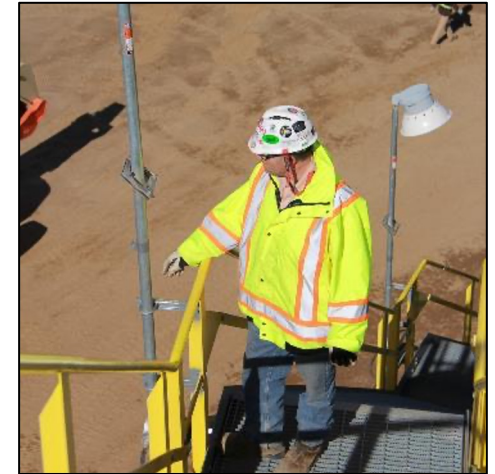
All of our site essentials meet industry standards, allowing your workforce to focus on their specialized tasks with minimal disruption.







# General Contracting that Fits Your Project...



The expansion of our service offering over the past half century coupled with strong project management and technical capabilities gives clients the confidence to trust Chemco with their projects.

**General Contracting and Construction Management:**  
We have the experience and controls to ensure predictability of costs, timelines, scope, safety and quality.





## Initiatives We Support

- o Children's Healthcare
- o Make-A-Wish Foundation
- o Ronald McDonald House
- o Community Fundraising
- o First Nations Partner Events
- o Sponsorship of Local Teams
- o And more!



**chemco**

**chemco**  
**cares**

Chemco's Corporate Social Responsibility Program (CSR) helps us consider the interests of our customers, employees, shareholders, communities, and to consider the social and environmental consequences of our business activities. By integrating CSR into Chemco's core business processes and stakeholder management, we can achieve the ultimate goal of creating both social and corporate value.

Through this integrated approach, we're building stronger Canadian communities.





## COMMUNITIES

# A Shared Vision:

## Chemco's Indigenous Commitment



We all have our strengths. Understanding them and finding a partner who augments them is a powerful combination. Chemco and our partners have formed long standing relationships to give clients a straightforward approach to getting their projects up and running.

— A proud member of —



## Partnerships

- Hwilitsum First Nation- BC
- Gitga'at First Nation- BC
- Ka-Kin Chemco- BC
- Heart Lake First Nation – Alberta
- Horse Lake First Nation- Alberta
- Louis Bull Tribe- Alberta
- Lac Ste. Anne Metis- Alberta
- Sturgeon Lake Cree Nation- Alberta
- Mountain Metis- Alberta
- Misty Chemco- Saskatchewan
- Peepeekisis Cree Nation- Saskatchewan







# Misty Chemco

Misty Chemco is an industrial general contractor whose goal is creating opportunity and prosperity for Indigenous people and their communities.



We invest in Indigenous tradespeople, professionals, and businesses to create a positive and lasting impact in the communities where we work. All of what we do is guided by our commitment to environmental and social sustainability.

Together, Misty Ventures and Chemco are creating opportunity for Indigenous people to create, grow, and share in the success of a model that changes the way industrial general contracting business is done in Indigenous communities.







# Adding Value

Our goal is to remove barriers for our clients helping them succeed on their construction and maintenance projects.

We strive to do this by offering a highly trained, specialized workforce across multiple disciplines that delivers predictability.

Backed by an award-winning infrastructure and project leadership team who understands what's needed to execute a successful project safely and with the highest level of quality.







**BUILDING  
INDUSTRY.  
BUILDING  
CANADA.**

**ONE PARTNER. MANY STRENGTHS.**

**chemco**

